

www.printspack.in

COMPANY PROFILE

Systems, Machinery, Members, Mandate



TABLE OF CONTENT

Raw Material Selection	01
Sampling & Approval	02
Designing Department	03
Printing Department	04
Post Printing Department	05
Finishing & Dispatch	06
After Sale Services	07
Customer's Feedbacks	08

Raw Material

01



Selection Importance

At Printspack, we are committed to producing eco-friendly packaging solutions that not only meet but exceed our customers expectations. Our dedication to sustainability is reflected in our choice of top-quality raw materials.

We proudly use ITC Paper boards, known for their eco-friendly properties, which ensure high-quality printing impressions while maintaining consistent quality with every project.

Additionally, we utilize Uflex printing inks that undergo rigorous checks and approvals from Uflex to guarantee that we achieve the finest results in packaging.

We believe that by prioritizing high-quality materials, we can help our clients make a positive impact on the environment while enjoying exceptional packaging options.

Sampling Approval

02



Development Approval

At Printspack, we understand the importance of getting every detail right when it comes to packaging. That's why we offer specialized machinery that allows us to produce a sample of your box prior to the bulk order production.

These samples serve multiple purposes: they allow you to check the design, text alignment, and color codes, ensuring they match your expectations for the final product. It helps you visualize your design preferences and make any necessary corrections regarding the packaging size or layout.

Most importantly, this process ensures a safer investment in your new product development. By reviewing the samples, you can confirm that all specifications are met before committing to large-scale production, saving you time and resources.



Intellectual Property

The important work being done by our in-house CTP Department. As you know, their primary focus is to ensure design safety and prevent any copying, misuse, or illegal use of your designs.

One of the critical measures in place is the immediate destruction of plates used in printing our packaging. This process is essential to safeguard our intellectual property and to prevent any potential misuse.

Our supervisors are dedicated to these protocols and they ensure that these claims are upheld with full confidence and hard work. It is this commitment that strengthens our company's integrity and reputation in the industry.



Finest Impressions

The Importance We Place On Maintaining The Highest Standards In Our Printing Department At Printspack. Ensuring The Finest Quality In Every Impression Is Crucial For Protecting the Brand's Appearance And Integrity.

To Achieve This Next-level Quality, We Utilize State-of-the-art Machinery. Our Printing Lineup Includes Four Komori Lithrone Machines: The G1437, Lithrone 29, And Lithrone 26, Lithrone S40 Along With Several Other Single And Double Color Printing Machines. This Advanced Equipment Allows Us To Produce Exceptional Printing Impressions And Meet Our Production Goals, Delivering Millions Of Packaging Units Each Month.



Definitive Advancement

At Printspack, we believe that a premium packaging experience is paramount, and that's why we offer a variety of post-printing enhancements that can truly elevate your product presentation. Our options include laminations, spot UV, crystal UV, and hybrid UV finishes, Gloss Aquas coatings & Full Gloss Coatings, each designed to add a unique touch to your packaging.

We take pride in using only the highest quality inks and films, ensuring that our enhancements produce the cleanest, most professional look possible. Our state-of-the-art automatic machinery guarantees exclusive accuracy, making sure each piece meets the highest standards.

Fragment, Finishing

06



Finishing & Dispatch

At Printspack, we believe that preparing boxes is truly an art form. Our state-of-the-art automatic machinery allows us to cut sheets and create boxes with remarkable precision.

Our box cutting and pasting machines boast impressive accuracy, ensuring that each detail is meticulously finished, cleaned, and packed separately. This attention to detail guarantees that we deliver error-free packaging to our clients every single time.

We take pride in our process and are committed to maintaining the highest quality



Return & Replacement

At Printspack, we strongly believe in cultivating long-term relationships with our clients and members. Throughout our 20 years of service, we have seen firsthand the value of trust and ongoing collaboration.

While we occasionally encounter some of the unprofessional packaging development due to defective paper, ink quality issues, or manufacturing processes, it is essential to note that we remain committed to resolving these matters. Our clients who believed in us from the beginning continue to partner with us, and we have always been dedicated to rectifying any defects in our developments, ensuring satisfaction.

Furthermore, we recognize that sometimes the designs provided by our customers can lead to challenges in achieving the desired quality. The strict adherence to design specifications from the customers can sometimes result in less than optimal outcomes. Therefore, fostering mutual understanding and open communication regarding design improvements given by our CTP Department can significantly enhance our collaborative efforts and development quality.

Customer Testimonials

08

Hard Working Staff And Promoters Too, I Got Updates On My Orders On Time Every Time , Which I Believe Is More Important To Have True Transparency Despite It's Delay Or Some Other Issues to be noticed.



Chaman Lal Setia Exports Pvt. Ltd.

Noticed Better Quality & Fast Turnaround As Compare To My Old Vendor. Choosing Printspack.in Was A Good Decision And Will Hope To Give More Business In Future.



Phileo By Lesafre France, India

For Me Low costs are much prior which printspack.in provided me and I am happy in cutting my packaging costs by 20% without compromising my development quality as guided by them.



Healthmist UAE Dubai

Impressed to see the promises done by the team printspack are truly fulfilled and prefer them a good packaging vendor for luxury brands.



True Nutrition Performance Pvt. Ltd.

Received My Good Safely And On-time As Promised Prior The Deal. Checked the quality & impressed by the fine printing and add-ons I put in the development, improving designs ideas by their team helped the packaging's outcome more premium.

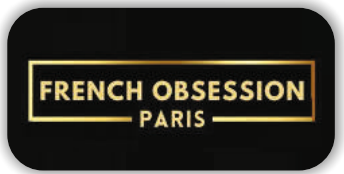


French Obsession Paris, Dubai

Their Wide Range Of Products Helped Me in fulfilling our regular printing requirements from the same vendor on better rates.



Radicon Laboratories Ltd.



Customer Satisfaction

Premium quality products, fastest turnaround time, and exceptional after-sale service! At Prtinspack.in, our primary goal is to provide you with an outstanding overall purchase experience.

Think Inside the Box
Creative Packaging Solutions

www.printspack.in

PRINTSPACK.IN

PRINTING AND PACKAGING COMPANY

Packaging Excellence,
Trusted by Leaders



And Other 250+ Brands

Contact Our Team

+91 8826131521 | +91 9999909808

+91 9540431521 | +91 9999209808

Corporate Office

110/111/112/131/132, Mohan Plaza,
Ghaziabad, 201001 (Delhi NCR)



www.printspack.in